

# 27<sup>th</sup> WORLD SCOUT JAMBOREE

Bid from the Danish Scout Council  
on behalf of Scouting and Guiding in Denmark



SPJD ERN

## TABLE OF CONTENTS

<b>1</b>	<b>INTRODUCTION</b>	<b>1</b>
1.1	The principal motivation of our NSO to host the World Scout Jamboree	1
1.2	The impact on Scouting and Guiding in Denmark	2
1.3	What qualifies our NSO to host the World Scout Jamboree?	2
1.4	Our NSO's experience of hosting events	3
<b>2</b>	<b>EDUCATIONAL OBJECTIVES</b>	<b>4</b>
2.1	Concept for the 27th World Scout Jamboree in Denmark	4
2.2	Educational methods	4
2.3	Key elements of the 27th World Scout Jamboree	6
<b>3</b>	<b>MANAGERIAL CAPACITY</b>	<b>8</b>
3.1	Planning Scouting and Guiding events in Denmark	8
3.2	Organisation of the 27th World Scout Jamboree	9
3.3	Financial capacity	10
3.4	Budget	11
<b>4</b>	<b>PROPOSED VENUE</b>	<b>14</b>
4.1	Process for determining the venue	14
4.2	Where is your proposed campsite located?	14
4.3	How the site is appropriate to welcome such an event	16
4.4	Infrastructure	17
<b>5</b>	<b>DATES FOR THE 27TH WORLD SCOUT JAMBOREE</b>	<b>19</b>
<b>6</b>	<b>WOSM GUIDELINES</b>	<b>19</b>
<b>7</b>	<b>CONCLUSION</b>	<b>21</b>

# 1 INTRODUCTION

## 1.1 The principal motivation of our NSO to host the World Scout Jamboree

Scouting and Guiding in Denmark can be traced all the way back to 1909 when different Scout groups were established. Shortly after, in 1910, our first National Scout Association was founded. Since then, more associations have been created, and today we have five internationally recognised national Guide and/or Scout associations in Denmark: the Danish Guide and Scout Association (SAGNO), the YMCA Scouts (WOSM), the Danish Baptist Guide and Scout Association (SAGNO), the Danish Scouts of Southern Schleswig (SAGNO) and the Green Girl Guides (WAGGGS) with a total of more than 70,000 members. The Green Girl Guides is the only association for girls only - all the other organisations are mixed. Both 'Boy Scout' and 'Girl Guide' are translated into the Danish word *spejder*. Beside the Danish associations, we are fortunate also to have Scouting and Guiding associations on the Faroe Islands and active local groups in Greenland.

Danish Scouts were among the original charter members of the World Organization of the Scout Movement (WOSM), and Danish Guides were among the founding members of the World Association of Girl Guides and Girl Scouts (WAGGGS). In 1924, Denmark hosted the 2nd World Scout Jamboree and introduced the camp concept of having everyone sleeping in tents and working in patrols, much like we know at the World Scout Jamborees today. Since 1961, Danish Scouts have been actively involved in WOSM through our federation the Danish Scout Council, and we are proud to continue a long history of active and influential involvement in the World Movement.

Within the federation, we have contemplated making a bid for a large-scale international event for quite some time. Based on our experiences with our joint national Jamborees and proactive involvement and participation in international events, we are confident that we can deliver a strong concept. We want to deliver a World Scout Jamboree in Denmark that is an amazing and authentic international and intercultural experience for the participants, Scouts and Guides, leaders and ISTs alike as well for all the partners involved in the planning. We will do so by involving and committing a truly diverse international planning team to deliver key elements.

Our bid is based on collaboration between all five Guiding and Scouting associations in Denmark, organised through our national umbrella organisation 'the Guides and Scouts of Denmark' (Spejderne). For an overview of the organisational structure of Scouting and Guiding in Denmark, please see Appendix 1

### FROM AN INTERNATIONAL PERSPECTIVE

Denmark would like to showcase our approach to Scouting and Guiding, facilitate intercultural meetings and embrace the global community with confidence. As a host country, we believe that we can become a role model for Scouting. We would like to show that our approach to young people with the key principle of youth leading youth is serious and ambitious and something Denmark is proud of. Young people get a lot of responsibility, we have a high level of trust, and we have a high level of volunteer participation and leadership training of our members. However, we are on a continuous journey, and we feel confident that we have much more to learn and are eager to do so by inviting the world to engage with us. Meeting so many cultures of the different NSOs and listening to their experiences and their approaches to Scouting would be a huge honour for us in Denmark – and an opportunity to grow even stronger.

### FOR THE INDIVIDUAL PARTICIPANT

Meeting other Scouts and Guides from different cultures will provide opportunities to develop new perspectives and gain life-long experiences on a personal level. At a World Scout Jamboree hosted by Denmark, the individual Scout or Guide will get to experience Danish values such as gender equality, democracy and youth

empowerment from an international perspective. In a cultural meeting, participants will learn that there are different ways of seeing the world, and by being curious, open-minded and by merely being close to each other, we can create respect and understanding across cultures and borders. The goal of creating a long-term impact in each participant will make an actual difference to the individual and to the world.

## 1.2 The impact on Scouting and Guiding in Denmark

We believe that hosting the 27th World Scout Jamboree in Denmark will play a significant role for all Danish Scouting and Guiding associations and the umbrella organisation the Guides and Scouts of Denmark. If the Guides and Scouts of Denmark is to host a large event like the World Scout Jamboree, it will elevate and further develop our organisations. It will generate awareness of Scouting and Guiding at both national and local levels, but on a much higher scale than experienced so far in connection with our national Jamborees. The World Scout Jamboree will be a great opportunity to strengthen the image of Scouting and Guiding even more by showcasing how Scouts and Guides assume responsibility for not only themselves and their communities, but also for our planet. We hope that the awareness and attention generated by a World Scout Jamboree will boost membership and provide us with a broader range of interesting and valuable partners. We are convinced that the individual young Scout or Guide in Denmark will take pride in the fact that we, across all NSAs, are providing an amazing experience to Scouts and Guides from all over the world. At the same time, it is our ambition that all Danish Guides and Scouts should have a Jamboree-related international experience. It is important to us that it will be felt and experienced by all local Scouts and Guides that Denmark is hosting a World Scout Jamboree, even though they cannot take part in the Jamboree as such. It could be through activities, events or programme materials. It is essential that all Danish Scouts and Guides feel that they are part of a global movement, and that the global movement is just as relevant as local and national Scouting and Guiding.

## 1.3 What qualifies our NSO to host the World Scout Jamboree?

In recent years, Danish Scouts and Guides have established a very strong national framework for cooperation, focusing on ways to strengthen the image and position of Scouting and Guiding in Danish society. Within this framework, there is focus not only externally, but also internally on how to mobilise relevant resources in order to create high-quality programmes and experiences for Scouts and Guides. While our NSAs are still completely separate and independent, we work closely together in the umbrella organisation the Guides and Scouts of Denmark, and we join forces at national level when relevant and necessary, for example when it comes to national Jamborees, fundraising and advocacy.

- Since 2012, the Danish Scouts and Guides have jointly hosted three national Jamborees called “Spejdernes Lejr” in 2012, 2017 and 2022 with an average number of participants exceeding 35,000 participants. While a national Jamboree is not the same as a World Scout Jamboree, these national Jamborees have provided us with invaluable experience and knowledge of how to host big Jamborees in Denmark. With two future national Jamborees planned for 2026 and 2030, we will have platforms and opportunities to strategically and sufficiently prepare for the 27th World Scout Jamboree.
- In 2015, [Spejderne](#) (the Guides and Scouts of Denmark), our national umbrella organisation, was founded to strengthen cooperation between the associations. This has resulted in substantial fundraising, the establishment of [the Youth Island](#), programme development, growth and stronger strategic interactions with the government on topics such as access to nature, meaningful youth participation in society and life skills.
- There is a great understanding of the World Scout Movement and the concept and principles of a World Scout Jamboree at national leadership level and among Danish key volunteers. We have a substantial number of volunteers with strong operational knowledge of how to deliver a major Jamboree setup - also from an international perspective.



- Scouting and Guiding have a strong and positive image in Denmark, which allows us to engage with a broad range of stakeholders. In close cooperation with the Danish National Youth Council, we have access to national and local political decision-makers and can engage them on issues affecting our work. Throughout the years, we have built strong relationships with local authorities, especially those who have hosted a national Jamboree.
- Our NSAs are financially solid and have a long track record of being financially sound. The stable financial situation allows for a strong joint planning, preparation and execution of the 27th World Scout Jamboree.

## 1.4 Our NSO's experience of hosting events

In Denmark, we have a longstanding tradition of planning and executing large Jamborees, most recently Spejdersnes Lejr 2022 with 32,000 participants and 67,000 guests. We are confident that we can deliver a great World Scout Jamboree by building on our experience, while taking into account the unique nature of this world event.

At the 22nd World Scout Jamboree in Sweden in 2011, several Danes were a part of the planning team, and they gained much practical experience that can be put into use if Denmark is to host the 27th World Scout Jamboree. A key learning from Sweden is that a World Scout Jamboree is an international event, and as such it cannot and should not be approached in the same way as a national Jamboree. This knowledge is key when it comes to creating the programme and preparing the organisation to shift from a Danish to global approach of thinking and planning. The intercultural aspect and understanding also play a crucial role in the process. In addition, we have had several Danes in the planning teams for the World Scout Jamborees in 2015, 2019 and 2023.

The NSAs in Denmark have proven that we can manage large and complex events. We can handle essential elements such as infrastructure and cooperation with local and national authorities, and we have a substantial number of volunteers and resources. Moreover, Denmark has previously hosted WOSM events such as the Refugee Response Forum in 2015 and the European Partnership Event in 2018. We have also hosted a significant number of Nordic events throughout the years.

## 2 EDUCATIONAL OBJECTIVES

### 2.1 Concept for the 27th World Scout Jamboree in Denmark

#### AMPLIFY OUR IMPACT

The Scout Movement is, and has been for more than 100 years, a powerful force of young people creating a better world. It is time to amplify this force and go beyond our boundaries and what we thought possible. We will celebrate our current successes as a movement and build on them to make our impact in the world even stronger.

The world and the communities we are a part of will face many challenges in future; challenges that are global in scope and unprecedented in scale. The challenges are related to climate change and resilience, conflicts, the complexity of technology and digitalisation as well as health and mental well-being. No one is more capable of addressing these challenges than young people, which is why it is crucial to empower them to create positive change in their communities. The vision of the 27th World Scout Jamboree in Denmark is to engage all participants in amplifying their joint impact in building a better world together. All participants will leave the World Scout Jamboree with a plan to make impactful positive changes in their communities.

#### YOUNG PEOPLE IN CHARGE - TAKING THE LEAD

To enable young people to truly move the world with intention and purpose, requires not only tools. A World Scout Jamboree is an educational arena where new skills and competencies are gained by practising learning by doing. The 27th World Scout Jamboree will focus on giving all participants the courage to take the lead and to find their inner voices. Most importantly, this Jamboree intends to provide participants with an arena to start acting and try out their new skills on real projects together with other Scouts and Guides during the Jamboree.

#### OUR AMBITION

- WE give young people the tools to take the lead
- WE empower young people to have the courage to do so
- WE provide young people with an arena to act

### 2.2 Educational methods

All programme activities will build on the current WOSM educational methods and engage the participants in three pillars to generate and amplify impact:



The pillars of impact are overlapping but each participant will be introduced to, trained in and practise each distinct pillar for impact during the 27th World Scout Jamboree.

#### CREATE

CREATE is about the power of taking action. It is the entrepreneurial, explorative and creative theme. Participants will practise how to use methods for social entrepreneurship to make a sustained positive difference in the communities they belong to, on both local and global levels. Participants will become inspired to see challenges in new ways which open up more opportunities, innovative solutions and partnerships.

## INFLUENCE

Scouting is not only a youth-lead movement, but also the world's leading educational youth movement. Young people learn how to lead, how to make decisions and how to embrace accountability. INFLUENCE will train participants in how to gain influence beyond just getting a seat at the table. Participants will learn how to be forceful advocates and to create positive change in the structures and systems that our societies and communities are built upon. INFLUENCE focuses on leadership and advocacy skills and how to be role models to others.

## VOLUNTEER

Volunteering is a very powerful source often overlooked by society, but Scouts and Guides have repeatedly proven the power of a movement of volunteers. In the VOLUNTEER theme, participants experience the power of a movement, working together for a better world and practise how to interconnect in a movement across generations, cultures, beliefs and interests. They will see the value and they will add to the world by volunteering in Scouting and other services - creating a better world together.

### 2.2.1 Programme areas

The programme activities will build on one or more programme areas relevant for how we build a better world. The programme areas will be further specified based on WOSM's relevant focus areas as well as the expected successor to the UN Sustainable Development Goals (SDGs), which will be adopted by the UN in 2030. The Jamboree will also be an opportunity to actively implement existing WOSM programme initiatives and provide a playground to test new educational concepts. In addition to enjoying a programme with a wide range of exciting, inspirational and fun activities, participants will experience a World Scout Jamboree building on the tradition started by the 2nd World Scout Jamboree in 1924 in Denmark. The programme will build on the basic camp life programme that sets the frame for an exciting and joyful Jamboree. Participants will experience a setup where they will work in patrols, sleep in tents, build camp infrastructure with wooden pioneering poles, make their own food over a campfire, and build new, long-lasting friendships during their evening campfires with other Scouts and Guides.

## LIVING TOGETHER IN A PEACEFUL WORLD

Globalisation, population growth and migration are just three of the factors that bring people from different cultures and backgrounds closer together in a shared community. Curiosity and acceptance of other cultures, to meet the people behind the differences on the surface, and dialogue for a common meaning are all crucial to shape a peaceful world. Activities in the area of "living together in a peaceful world" will focus on cultural meetings and understanding, peace building, spirituality, equality and human rights in our world and societies. This programme theme will be the basis for a cultural day on which the whole World Scout Jamboree celebrates our cultures and differences.

## HEALTH AND WELLBEING FOR EVERYONE OF ALL AGES

Even if we have made tremendous progress as a global population in ensuring healthy lives and promoting the well-being of people of all ages, there are still significant challenges to handle, including women's and children's health, access to nutrition and healthy lifestyles, environmental pollution, global pandemics and mental health. As part of this theme, participants will learn about key challenges to achieve and promote health and well-being, both on an individual and on a systemic level. An essential foundation to be able to care for others and to be a part of a long-lasting and sustainable change is to first be able to care for your own physical and mental needs. The theme will comprise both the aspects of health and nutrition as well as themes related to mental well-being such as social inclusion and body image.

## SUSTAINABILITY AND CLIMATE FOR A RESILIENT WORLD

We experience the effects of climate change in very different ways, depending on where we live in the world. However, we are all affected, and in a digitally connected world, we can see the global consequences in the

media and recognise the need for action. None of the global climate change issues can be solved by one person alone, but we can all contribute with the means we have. Activities in the area of “sustainability and climate for a resilient world” will focus on urban and rural sustainability, raw materials, circular living, natural ecosystems, recycling and upcycling, sustainable agriculture and food systems, and sustainable management of water.

## RESPONSIBLE TECHNOLOGIES FOR A BETTER WORLD

An accelerating technological development brings incredible solutions that help save lives, increase living standards, level out inequalities, save our natural ecosystems and so forth. However, it also brings demanding challenges such as digital addiction, fake news and a digital divide. Participants will explore both sides, learn to embrace the reality of a double-edged sword and practise how to use technology responsibly for good purposes. Participants will practise the responsible use of new technologies and learn how to leverage the tools to amplify their impact and create a better world. Furthermore, participants will practise constructive criticism and critical thinking as well as a healthy relation to digital tools, platforms and content.

## THRIVING COMMUNITIES AND SOCIETIES

The area of “thriving societies and communities” is focused on how to build strong communities based on democratic values with good governance, respect for human rights, a strong civil society, active participation, equality, fundamental freedom, transparency and democratic institutions. As part of this theme, participants will explore what constitutes a community, ranging from the global community we are all part of to the smallest and closest community of our own friends and family. Participants will practise how to work with democratic principles and values in practice and what can be done to support and promote such values.

## 2.3 Key elements of the 27th World Scout Jamboree

### LEADING TO A PLAN FOR IMPACT

The 27th World Scout Jamboree is intended as a platform where young people from around the world will not only raise awareness of the issues, they experience in their everyday lives but also get the knowledge, motivation and friendships to start changing their own lives and their communities. Participants will get activity time in each of the main programme areas. In the five programme areas, each participant will learn about and actively relate to each of the programme themes through activities. Inspired by the different themes, the participants will design their own “Impact” project for which they will be equipped, empowered and given an arena to act. After the introductory days in each area, the areas will be open as drop-in activities, where the participants can explore even more and focus on their Jamboree experience in designing and refining a plan for impact and for exploration of means to amplify that impact.

### DAILY REFLECTIONS

To support the learning process and the ability to relate to the programme areas, each day is completed with short daily reflections guided by digital tools. The daily reflections are utilised throughout the entire programme and may take many forms. As an example, a daily reflection may be a set of questions related to the theme of the day, a set of images to relate to, a song, a short meditation etc. and it may be performed in groups or individually. The purpose is to root the learnings, the insights and the inspirations from the day.

### CAMP WIDE HACKATHON

A hackathon is an intense collaborative sprint where participants work on solving a defined problem by developing innovative ideas, solutions or prototypes. This is what all participants will experience during a Jamboree-wide hackathon with multiple sprints focusing on different real-world problems without an easy answer. Relevant national and international NGOs, institutions, companies, movements, communities, leading thinkers, foundations and others will be invited to the Jamboree to host the different hackathons and to be an active part of the programme. Participants will experience both the thrill and the challenge of solving difficult



problems together in an intense and focused process. This “Jamboree-wide hackathon” will possibly make the 27th World Scout Jamboree the world’s biggest multi-hackathon for social impact.

### **“LEADING FOR IMPACT TRAINING” FOR ALL ISTS**

We want to focus on the IST experience and acknowledge their contribution by providing training for all ISTs, focusing on the power of volunteering and how to lead for impact through others. All ISTs will receive training that they can use to train others, and they will be given a certificate in leading for impact and training content to bring back home. ISTs will play an essential part in the empowerment of participants in setting a goal for their aim to make a positive impact on their society. By training the ISTs, the 27th World Scout Jamboree aims to let all ISTs gain ownership of the goal to empower all participants to make an impactful change in the societies they live in.

### **IST AND ADULT LEADER PROGRAMME**

The ISTs and adult leaders are valued contributors to the World Scout Jamboree and our movement. We want to emphasise the importance of volunteering and use the World Scout Jamboree to focus on the great tasks that volunteers do every day in all corners of the world. The 27th World Scout Jamboree will have an extensive programme for ISTs and Adult Leaders allowing them to engage and participate when they have time off. At the Jamboree, priority will be given to allowing ISTs time off and to offer advice and examples for adult leaders on how to prioritise time for themselves so that they can experience the camp, while still being responsible for their troops. Adult leaders will also have the opportunity to participate in activities if they want to.

### **DIGITAL ENGAGEMENT PLATFORM**

We will provide a platform to guide reflections and connectivity for participants on and off Jamboree (including pre and post Jamboree). We imagine a digital platform on which Scouts and Guides can keep notes of their thoughts, learnings and motivation - and at the same time draft their own plans. We can also use the platform to send the participants regular updates on their progress and keep the participants committed to their cause/project. Moreover, depending on the progress in AI, the digital platform might help participants in planning the next step in their project. The platform might also be a logical place to share experiences with other Scouts and Guides from around the world and ultimately become a database of ideas, plans and actions for change. The digital platform enables the Jamboree to transcend the physical boundaries of the Jamboree as well as the boundaries of time for the Jamboree - prolonging the Jamboree to continue after the end of the Jamboree when the participants are working on their plans and projects. The platform can also invite young Scouts and Guides who are not at the physical campsite to participate in the Jamboree.

### **PRE/DURING/POST JAMBOREE ACTIVITIES FOR EVERYONE**

A World Scout Jamboree should be much more than two weeks in Denmark. We want all Scouts and Guides to feel the Jamboree vibe, but also make sure that the educational journey starts before and keeps going after the actual World Scout Jamboree. To engage as many Scouts and Guides as possible and make them feel like a part of the Jamboree, we want to use platforms, e.g., WOSM's platforms, such as JOTA/JOTI, to connect with Scouts and Guides from around the world and share activities and programmes before the World Scout Jamboree. During the World Scout Jamboree, virtual portals to other ongoing camps and World Scout Jamboree activity programmes and badges will be available for all to participate in the educational journey. After the World Scout Jamboree, educational programmes and activity material will be shared with the whole Movement to use as inspiration for local Scout groups. There will also be an “Impact” programme designed to support Scouts and Guides in their “impact” projects, stay motivated in their mission, share successes and celebrate goals achieved. The 27th World Scout Jamboree is more than a one-off event, it is a progressive education platform before, during and after the actual event.

## 3 MANAGERIAL CAPACITY

### 3.1 Planning Scouting and Guiding events in Denmark

In Denmark, we have a unique and very strong history of something called “Foreningsliv” (*association life*) which is a term that we use when someone joins a Scout and Guide association, a sports club or another volunteer-based association and becomes a part of a committed community where physical activity, well-being and basic life skills are the main attractions. In our associations (*foreninger*), we meet in our spare time and learn about nature, how to lead, how to be lead, how to be active, develop interpersonal skills etc. Everyone involved are volunteers. The key words in relation to associational life are *community, volunteering and room for diversity*. The basis of associational life is also commitment, which is quite obvious in our national Jamboree cycles. Since we have national Jamborees every four years in Denmark, the Danish Scouts and Guides are used to committing themselves to planning phases lasting 3-4 years. The experiences gained from our national Jamborees also enable volunteers to realistically determine whether to commit themselves to play a role in the planning phase or not. This means that if they commit themselves, they know what to expect and that they will wholeheartedly complete their task.

#### STRONG INTERNATIONAL COOPERATION

In addition to our own experience, the neighbouring countries to Denmark hold great knowledge from previous WOSM events, and we work closely together in many different arenas. Hence, we already have close ties to resourceful NSOs who have attended both World Scout Jamborees and our national Jamborees, and it is highly likely that some of their volunteers would like to be a part of the planning team for a World Scout Jamboree in Denmark. However, it is fundamentally important for us to ensure that volunteers from all regions feel welcome and are invited to join. We know that an internationally diverse planning team is a key aspect if we want to deliver a truly global World Scout Jamboree. As such, we will ensure a transparent open call process for all planning team positions focusing on sharing information openly and consistently, so volunteers from all over the world have an equal opportunity to apply and become involved. This will be done via official and accessible communication channels in a timely manner in order to provide sufficient time for volunteers to get engaged. Throughout the planning process, we will accommodate different time zones, facilitate international teams and ensure that all relevant planning materials are in English and accessible for everyone in the planning organisation.

#### 3.1.1 Level of competences in the planning organisation

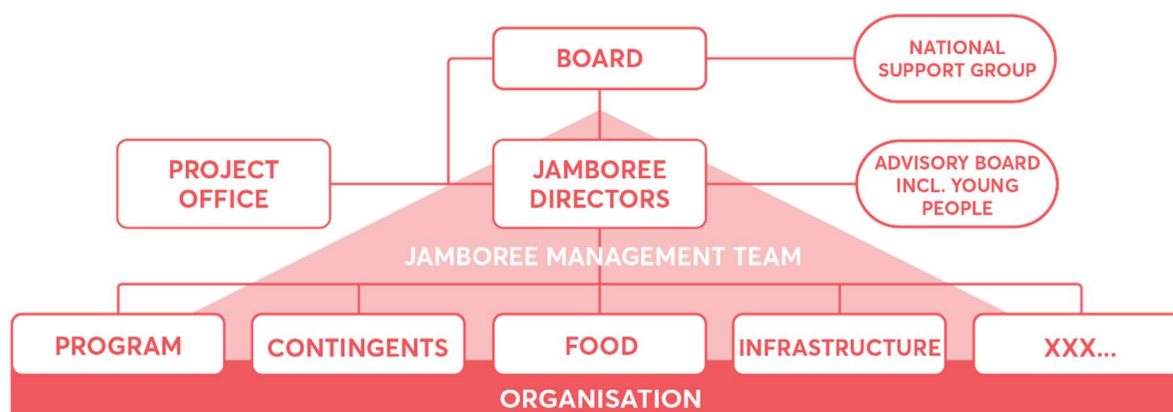
At all our national Jamborees in Denmark, all WOSM's regions have been represented, and approximately 10-12% of the participants have been international participants. Hence, we have experience with visas, lost luggage, equipment and travel arrangements. Primarily, the three national Jamborees (Spejdernes Lejr 2012, 2017 and 2022) were run by volunteers and only a few paid staff members, which shows that we have a great amount of knowledge of not only planning Jamborees, but also of taking care of each other in the planning phase, keeping deadlines and committing to agreements. Moreover, we are used to communicating in English, and the far majority of Danes are proficient English speakers. We are exposed to the English language already at an early stage of life, and English is the second language taught in school from the age of 6.

The patrol system is a strong framework in Denmark on both a local and national level, so shared leadership is quite natural to Danish Scouts and Guides. Young people are quickly given responsibility and the possibility to grow and learn, both in their local troops, but also in other decision-making bodies where seats are often reserved specifically for young Scouts and Guides to be meaningfully included. Due to their experiences and education as leaders, young Scouts and Guides in Denmark are quite capable of taking part in planning teams, and it will be a key principle for our Jamboree organisation to ensure that young people are involved on an equal basis as adults. In Denmark, we have a long-standing tradition of having young people in our local, district-level

and national decision-making boards. That is something we want to have reflected throughout the organisational structure of the 27th World Scout Jamboree.

## 3.2 Organisation of the 27th World Scout Jamboree

### ORGANISATIONAL CHART



### 3.2.1 Overall organisational approach

The 27th World Scout Jamboree is expected to be organised as a separate entity to the umbrella organisation, Spejderne. A primary organisational objective is to place/delegate responsibility and decision-mandate as close to the task planning and execution as possible. We have great success with a management principle where the person who executes also makes the decisions, and it is a best practice we will implement for this Jamboree as well. The governance structure will be transparent and described in documents, so the complete structure and responsibilities are clear to everyone. We also work with a principle of shared leadership, both in terms of gender and youth involvement. This means that there will be two people with different genders, profiles and experiences in charge of all top-level units. Shared leadership is a means to ensure both diversity and resilience in the planning of the 27th World Scout Jamboree. By implementing shared leadership, we support young or less experienced members in taking a leadership role by letting the responsibility be shared with a more experienced leader. However, shared leadership is not intended as a mentor and apprentice divide. It is true shared leadership between the two people responsible for a given area. With this, the World Scout Jamboree will be a platform for young people to truly learn and practice planning and leadership in real life. It will also ensure more diversity throughout the planning team, both in regards to age, gender, nationality and previous experience.

**THE BOARD** will be appointed by the participating NSAs. The Board will consist of members with relevant competences and experience. WOSM will have a non-voting seat on the Board.

The **JAMBOREE MANAGEMENT TEAM** consists of the Jamboree directors and the responsible heads of the planning entities, such as campsite, events, programme, food, security (the exact definitions of those entities will be determined by the camp directors and agreed with the Board). All management positions will have shared leadership between two people. At least 25% of the Jamboree Management Team will be no older than 30 years old as described in the WOSM guidelines.

The purpose of **THE NATIONAL SUPPORT GROUP** is to provide a space, where important national focus areas can be discussed with relevant stakeholders. The group can include authorities, organisations in the vicinity of the campsite and persons with insight into relevant subjects. This is a way of ensuring that relevant stakeholders are included in discussions, when relevant, to qualify the decision-making processes.

The purpose of **THE ADVISORY BOARD** is steering and advising on international and intercultural concepts for the programme, campsite layout/functions, and the Jamboree in general. The Advisory Board functions as a sounding board and will consist of people with different backgrounds and experiences from international Scouting and Guiding. More specifically, we will ensure that there are international **YOUTH REPRESENTATIVES** (14-18 years old) on the Advisory Board, and that the Advisory Board is structured to meaningfully engage them on all relevant topics. The youth representatives on the Advisory Board (in addition to the young people in the Jamboree Planning Team) are ways of taking into account the Jamboree participants' perspective in both Jamboree management and governance.

**THE PROJECT OFFICE** comprises the staff supporting the Management Team, handling administration and budget/accounting, obtaining the necessary permits, coordinating procurement and managing external and internal communication and other relevant tasks.

### 3.3 Financial capacity

The five Scout and Guide associations and the umbrella organisation 'Spejderne' have the initial financial capacity. However, the formal and informal networks in and between the five Scout and Guide associations in Denmark are very strong and have shown the capacity to mobilise the needed resources in many situations. We have a long tradition of receiving financial support from local authorities for national Jamborees. The local authorities have even provided additional resources for the national Jamborees. We consider it very likely that we will receive support to an even larger extent for the 27th World Scout Jamboree from the local authorities of the partner municipality(-ies).

#### 3.3.1 Access to private, philanthropic and corporate sponsors

Based on our successful fundraising experience from Spejdernes Lejr 2022 (see Appendix 2), we are planning a process, which will mainly focus on two phases. Phase 1 will focus on more long-term strategic sponsors, whereas phase 2 will focus on finding sponsorships for the activities at the World Scout Jamboree. Since we have a national Jamboree in 2030 which will function as a “pre-World Scout Jamboree” in many ways, we intend to merge the 2030 and 2031 activity fundraising applications. This means that we will contact foundations and ask for support for activities that will be tested and carried out at the national Jamboree in 2030 – and afterwards refined even further for the 27th World Scout Jamboree. We consider the process to be a win-win for all parties (Scouts, Guides and foundations). In this way, the foundations will only have to consider and approve funding applications once, and their contributions will be visible in both 2030 and 2031 on a great scale. And we will be able to reuse materials, improve and become even better at carrying out the activities.

#### FUNDRAISING PHASES

**Phase 1** (3-5 years before the camp): Focus on corporate sponsors and strategic partnerships. This phase will be centred around finding more long-term corporate, public and philanthropic partners for in-kind and financial support. In addition, this phase will also focus on securing partnerships with companies, who will provide materials and resources at favourable prices. From previous national Jamborees, we have good experience working with corporate partners on sourcing sustainable and locally based products and materials.

**Phase 2** (1.5 - 2 years before the camp): Focus on foundations and funding for activities. Based on our experience with foundations in Denmark, the process must start approximately 1 ½ years prior to the 2030 national Jamboree as many foundations have a designated time limit for when their funds for activities have to be used. This is also due to the development of the activities, which we would like to be as far along in the process as possible - to avoid the possibility of changes. Too many changes would have consequences for the commitments we make to the foundations and would make us appear unprofessional - and perhaps not attractive to work with in the future. So it requires careful planning and timing for us when working with foundations in Denmark.

(See list of potential foundations, banks and companies in Appendix 3)

### 3.3.2 Solidarity operations

Another important fundraising angle for us is to make sure that the 27th World Scout Jamboree becomes as inclusive and accessible as possible. This means we will do our utmost to help those with less resources. In the budget, we have increased the solidarity programme from the mandatory 2,5% to 3% to ensure our commitment is reflected. The overall setup of solidarity operations will be handled in close cooperation with WOSM, and the World Scout Bureau has the final say in terms of management. However, we initially suggest creating a supporting structure with a team of fundraisers who will have two tasks: 1) oversee engagement with relevant Danish foundations and apply for financial support to increase the funds for solidarity operations, and 2) help identify and engage with corporate sponsors/companies who are willing to provide financial or in-kind support, such as for example camp equipment. We have recent experience from Spejdernes Lejr, where we had great success in receiving grants from foundations to support the participation of Ukrainian Scouts and Guides. We have developed a list of foundations (see appendix 3) and we will add more in the years to come.

### 3.3.3 Stakeholders

Based on many years of collaboration with other organisations with values similar to those of Guiding and Scouting and on strong networks on both national and local level, we can get support from a variety of stakeholders. The five Danish Scout and Guide associations are very well connected to the Danish Youth Council and the Confederation of Danish Industry. Moreover, we have established the Danish Scout and Guide Committee (internal board of high-level individuals lobbying on behalf of Scouting and Guiding), which has strong connections to parliamentarians, companies and foundations. We aim to use these networks and connections to provide the best possible political stakeholder support for a potential World Scout Jamboree in Denmark.

We have a strong tradition of inviting politicians and business partners to our national Jamborees to gain an insight into how Scouting and Guiding create a positive impact on, by and for young people. In 2022, politicians from 75 out of 98 municipalities visited Spejdernes Lejr, and visits were also paid by the Danish Prime Minister, the Minister of Culture, the Minister of Foreign Affairs and Her Royal Highness Princess Benedikte. In addition, several business partners, companies and foundations who had supported Spejdernes Lejr participated in the official reception. They were impressed by the Jamboree and its beautiful surroundings. In general, Scouts and Guides in Denmark receive great support from both politicians and foundations. For example, in 2023, the A.P. Moller Foundation in Denmark supported three large Scout and Guide projects with a total of UDS 29.2 million.

## 3.4 Budget

### 3.4.1 Estimated number of participants

Our suggestion is to invite **40,000** participants and **10,000** members of the International Service Team (IST), in total: **50,000** people, to take part in the 27th World Scout Jamboree. However, it is important to emphasise that further reflection on the total number might be needed to make sure that the Jamboree will offer the best possible quality of programme and experiences, and not focus only on the quantity of numbers.

### 3.4.2 Estimated participation fees

The estimated participation fees are calculated based on the average Jamboree organisational costs per participant. In determining the participation fee, we have taken into account the historically high inflation, which is also important for the credible implementation of a World Scout Jamboree in 2031. However, due to the current economic situation worldwide, it is difficult to predict the participation fees with certainty. This calculation should be updated 4 years before the Jamboree and be approved by the World Scout Committee in 2027. The participation fee will be charged in Danish kroner. However, in the table below, the participation fee



is stated in USD in relation to the current exchange rate. The Danish monetary policy aims for the DKK to follow the Euro, and the DKK thus has a stable exchange rate.

CATEGORIES	Fees in USD (DKK)
Category A	300 USD (2250 DKK)
Category B	600 USD (4500 DKK)
Category C	900 USD (6750 DKK)
Category D	1,200 USD (9000 DKK)

### 3.4.3 Draft revenue budget

We have identified two categories of revenue – known and presumed. The amounts of the participation fees (as revenue) are estimated based on the expected number and categories of Jamboree participants. The presumed revenue might originate from ticket sales, local government funding, partnerships and sponsorships. Sales and sponsorships are estimated based on earlier national Jamborees. We have a conservative approach to budgeting, and we are confident that our budget estimate is financially sustainable.

REVENUE	USD
Participation fees	52,962,000
Sales and day visitors	3,638,000
Sponsorships	3,000,000
<b>TOP LINE - TOTAL</b>	<b>59,600,000</b>

### 3.4.4 Draft budget of expenses

In terms of expenses, we have identified key expenses which are needed to ensure a smooth organisation of a World Scout Jamboree as well as additional expenses. The expected expenses are projected based on experiences and data from both previous national Jamborees and available financial data from previous World Scout Jamborees. The key expenses cover infrastructure, communication and marketing, transportation, contingent support, food and catering, programme, event administration and organisational costs. Food expenses also take into account additional expenses to meet different cultural needs. In our consideration of cash flow, we have also set aside funds from 2024 to ensure sufficient funding for the early planning stages of the camp.

COST	PROPORTION	Sum USD
Food	18%	10,500,000
Program/activities	10%	5,960,000
Ceremonies	6%	3,576,000
JPT+WOSM	2%	1,192,000
Solidarity program	3%	1,788,000

Contingent support	5%	2,980,000
professional organisation	10%	5,960,000
Camp infrastructure	15%	8,940,000
Transport and food in airport/buses	8%	4,768,000
IT	3%	1,788,000
Communication	4%	2,384,000
Sales (COGS)	4%	2,384,000
Early planning	5%	2,682,000
Reserve	6%	3,576,000
<b>TOTAL</b>		<b>58,478,000</b>
SURPLUS	2 %	1,122,000

### 3.4.5 Financial risks

When looking at our estimated budget, there is a financial risk on the income side in relation to sponsorships and sales as it is estimated revenue. Simultaneously, there is also a risk in relation to inflation, including inflation on individual product groups. In 2022 and partly in 2023, we have seen a rise of inflation globally, which has had a significant impact on prices. The majority of the expenses in our budget are related to the inflation in Denmark. In general, Denmark has a healthy economy, and it is expected that inflation will fall to a more normal level in the coming years. As such we have chosen to have a reasonably high budget reserve to ensure room for handling any potential drop in revenue or increased expenses. It is also worth noting that we have allocated funds for weather-dependent expenses in the sub-budget for camp infrastructure.



## 4 PROPOSED VENUE

### 4.1 Process for determining the venue

In Denmark, we have a somewhat distinctive approach to hosting Jamborees. Over the past 11 years, the Guides and Scouts of Denmark have hosted three national Jamborees (Spejdernes Lejr 2012, 2017 and 2022) at three different locations. Our next national Jamboree scheduled for 2026 will also take place in a completely new location. The reasons for this approach are quite simple:

1. We do not have a permanent campsite that can accommodate 40,000+ Scouts and Guides
2. Moving around provides an amazing opportunity to collaborate with the local authorities of different local municipalities.

For every national Jamboree, the Guides and Scouts of Denmark facilitates a public tender process in which the local authorities of all municipalities in Denmark can make a bid. Much like WOSM bidding process for events, the Guides and Scouts of Denmark facilitates a bidding process to host Spejdernes Lejr. If the local authorities of a municipality are interested, they must prepare a bid comprising concept, partnership strategy, funding etc., and then, the Guides and Scouts of Denmark will enter into negotiations with the best municipal bid.

The plan is to prepare an identical tender process for the 27th World Scout Jamboree in 2031 but invite local authorities to make a combined bid for both Spejdernes Lejr 2030 and the 27th World Scout Jamboree. Since we will have a national Jamboree in 2030, the 2030 Jamboree will be used as a pre-Jamboree for the 27th World Scout Jamboree to ensure strong synergies, a test of the campsite and the infrastructure. It will moreover ensure sustainability in terms of the materials used and activities. The sustainable aspects of combining the two Jamborees are essential and will be key in minimising the environmental impact. Moreover, it will also ensure a very strong Jamboree framework. We have already been in contact with local authorities of municipalities who are interested in hosting both Jamborees, and we have entered into a dialogue with potential bidders.

For the sake of being able to provide WOSM with an understanding of how we would approach the process of hosting a World Scout Jamboree, we are presenting the Sønderborg campsite as a business case below. We hosted 37,000 Scouts and Guides in Sønderborg in 2017 and are very familiar with the campsite as well as the municipality.

### 4.2 Where is your proposed campsite located?

The site described in this presentation for the World Scout Jamboree is in Sønderborg, which is a city located in the southern part of Denmark close to the border to Germany (Southern Jutland). Sønderborg city has around 30,000 inhabitants and is the principal town of the municipality comprising a network of small towns and villages. Sønderborg Municipality has 76,000 inhabitants, is part of the administrative Region of Southern Jutland with more than 700,000 inhabitants and located in the Danish-German border region in which more than 4 million people live.

Sønderborg is known for its rich cultural life and history based on dramatic events that appeal to the young generation. It is about identities, cultural meetings as well as people and democracy. For more than 150 years, war and changing national borders have required the inhabitants of the area to take a stand on difficult choices with great personal consequences. For 56 years, the Danish minority had to fight for their national values. Even so, the Danish and German minorities coexist peacefully today and benefit from the best of both cultures. The history of Sønderborg is living proof that common understanding can be achieved despite years

of conflict. Today, the municipality comprises a modern city and is associated with strong partnerships, not least because of the good connections to the rest of the country and beyond the Danish borders.

The proposed location for the World Scout Jamboree is approximately 500 hectares of combined farmland and a former military training area just outside of the city. Parts of the site hosted Spejdernes Lejr 2017 with 37,000 participants. There is a huge stage area (10 hectares) established for Spejdernes Lejr 2017, which can fit a sitting audience of up to 100,000 people.

#### 4.2.1 Potential official entry points to Denmark

Potential official entry points include Copenhagen Airport (CPH), Aalborg Airport (AAL), Billund Airport (BLL) and Hamburg Airport (HAM), see the access point map in Appendix 4.

- **COPENHAGEN AIRPORT** (IATA: CPH, ICAO: EKCH) is located 324 km (4.5 hours by bus/train) from the campsite. Copenhagen Airport is not only the main airport in Denmark, but also the biggest in the Nordic countries. The airport has more than 30 million passengers annually and boasts a timetable of both regional and international flights to destinations all over the world. The airport is also directly connected to the railway system, which allows for easy access to trains to both Copenhagen and Sønderborg. Copenhagen Airport was also used as a main entry point for the 22nd World Scout Jamboree in Sweden in 2011.
- **BILLUND AIRPORT** (IATA: BLL, ICAO: EKBI) is located 136 km (2 hours by bus) from the campsite. Billund is the second biggest airport in Denmark with more than three million passengers a year. Most major European airports are connected to Billund by multiple scheduled daily flights.
- **HAMBURG AIRPORT** (IATA: HAM, ICAO: EDDH) is located 196 km (2.5 hours by bus/train) from the campsite. Hamburg airport is located in Northern Germany close to the Danish border and will provide an additional entry point to the Jamboree. Hamburg Airport caters for more than 17 million passengers annually and is a hub for both regional and international flights.
- **AALBORG AIRPORT** (IATA: AAL, ICAO: EKYT) is located 311 km (3 hours by bus/4.5 by train) from the campsite. It is one of the small airports in Denmark, but still caters for regional and international flights with approximately 1.5 million passengers annually.
- **THE DANISH/GERMAN BORDER** is located 38 km from the campsite. We would expect a high number of the contingents, especially from Europe, to arrive by bus and will be able to facilitate a large number of buses that drop off and pick up participants.
- **FERRY TERMINALS:** There are several different ferry terminals connecting Denmark and the neighbouring countries. The most relevant would be the ferry routes to the UK, Germany and Norway, which have several crossings every week.

#### BUS TRANSPORTATION FROM OFFICIAL ENTRY POINTS

Throughout the years of hosting our national Jamborees, we have gained valuable experience in planning and executing bus transportation to and from campsites. For the World Scout Jamboree, it is envisioned to build on the principle of dedicated transportation solutions, which entail that it is made as easy as possible for as many Scouts and Guides as possible to go to the camp by bus or other public transportation. Further along in the process, **we will designate 1-2 official entry points** for the camp and ensure bus transportation from entry point to the campsite. In our budget estimate, we have taken into account transportation of all

participants from official entry points as well as provision of food and drinks for participants with a transfer time of more than 3 hours.

We know it is essential that arrivals at and departures from the campsite are efficient and on time to ensure a strong first and last impression of the World Scout Jamboree. At Spejdernes Lejr 2017, up to 90 buses arrived or left each hour, which made for a smooth transportation of all 37,000 participants. Based on our experience, flexibility will be a key component as well as a strong system integration element between the camp registration system and the bus planning system to make the user experience accessible and reliable. In addition, a dedicated transportation solution offers attractive prices because contracts are concluded with one main bus company and gives the best chances of minimising the environmental impact. In addition, we will have the opportunity to refine the transportation setup at our national Jamboree in 2030.

### 4.3 How the site is appropriate to welcome such an event

The campsite is located 1.5 km from Sønderborg city centre, which provides for easy access to transport, cultural activities and the local municipality. In addition, the campsite is located right next to Alssund (a narrow strait) with 2 km of coastline, which is safe for a broad range of water activities. The campsite is also above sea level, and there is substantial water drainage infrastructure in place. As mentioned previously, the campsite is 500 hectares in total and is divided by hedgerows, small waterholes and a minor forest, which constitutes a diverse natural environment with open areas and areas with shadow. The area is normally used as a green recreational area for the local population. In Appendix 5, we have provided an overview of the suggested campsite structure with activity areas, campsites, parking etc. The Jamboree area includes approximately 180 hectares for campsites and 150 hectares for activity sites.

#### STAGE AREA

For Spejdernes Lejr 2017, a huge stage area of 10 hectares was permanently established with room for 100,000 sitting audiences. The technical installations are still in place, and the area has been used afterwards for major concerts, for example Bon Jovi and Def Leppard in 2019.

#### FACILITIES IN PLACE

As the area is a former military training area, there are already a number of buildings in place, which are available for the Jamboree management. There is a total of 3,000 m<sup>2</sup> broken down on four buildings on the campsite. They can be used for everything from camp administration and storage to activity space. There is also a very big public school close by, which can be used before and during the Jamboree, for example for press centre and overnight stays. In addition, the local authorities of the host municipality will provide meeting facilities for all planning meetings leading up to the Jamboree.

#### OFF-SITE ACTIVITIES

The campsite offers access to a wide range of potential off-site activities. Alssund, being a narrow strait, offers access to safe and fun water activities. With Sønderborg city located only 1.5 km from the campsite, participants will be able to experience cultural and historical activities in the surrounding local community. In addition, places such as Legoland (amusement park), Universe (adventure park) and Dybbøl Mill (significant Danish historical landmark) are all possible venues for off-site activities.

#### SØNDERBORG MUNICIPALITY

The local municipality of Sønderborg has a strong interest in ensuring local involvement and partnerships, which align with the values of Scouting and Guiding. Sønderborg is an ambitious and resourceful municipality with long-standing experience in working with organisations and volunteers. They will be able to provide technical insight and knowledge of the area, the involvement of a wide range of local and sustainable suppliers and a very active local community who are interested in supporting the Jamboree.



## ACCESSIBILITY

Accessibility and inclusivity remain key principles in how we approach the establishment of a camp or a Jamboree. In Denmark, we firmly believe that Scouting and Guiding is for everyone, and that no barriers should exclude anyone from taking part in camp life. This means that accessibility is mainstreamed throughout the technical planning process, focus being on ensuring that all roads and paths are accessible not only for wheelchairs, but also support vehicles. The same goes for activities and how to best support troops who have Scouts and Guides with special needs. We also have quite positive experiences from creating a safe physical space within the main Jamboree to which people with disabilities can withdraw to take a break and recharge their energy so that they are able to take part in camp life on their own terms. At Spejdernes Lejr 2022, we created the “camp assistant” project in which a specific team of volunteers teamed up with young and adult Scouts and Guides with disabilities to support and empower them to have a great camp experience.

## SAFETY AND SECURITY

Denmark is a very safe country, and we have hosted many big Guiding and Scouting camps for decades. Even though our camps are usually quite open, only minor incidents of theft have occurred; never any serious incidents. As part of the camp emergency management, we work closely together with national and local police authorities. The local police department will set up a dedicated police station at the Jamboree site, and they will interact daily with Scouts and Guides in a very positive and peaceful manner. All safety and security procedures are carried out in cooperation with the relevant authorities, and there will be both an internal and external emergency management setup. Planning team volunteers and ISTs will be key components in the safety and security setup - supported by relevant authorities. There will be ambulances and fire trucks on site with an additional number on standby at the local emergency department. The Jamboree will have its own Jamboree hospital with sufficient capacity to handle most of the injuries and diseases locally, whereas more serious cases will be referred to the nearby hospitals. There is a local hospital 4 km from the campsite, and a large regional hospital 26 km from the campsite.

## WEATHER CONDITIONS

In general, the weather is most conducive to outdoor adventures in June, July and August. Days are warm, but rarely hot, averaging between 20°C and 26°C. Nights are colder with an average temperature of 14-15°C. Average humidity during the summer is around 75%. While August remains the warmest month, rain is to be expected with an average of 67 millimetres throughout the month. However, the weather is variable with summer storms and unexpected rainfalls.

## NATURAL RISKS

Our potential campsite is completely safe from any natural risks likely to affect a large-scale event like a Jamboree. Denmark is a geologically very stable country and remains outside the scope of natural hazards such as earthquakes, volcano eruptions, wildfires and floods. Weatherwise, strong winds and short summer storms are to be expected, especially because the campsite is situated close to the water. However, this should have no significant impact on the Jamboree itself. In case of heavy rainfall, the proposed site can soak up a huge amount of water without flooding, although it may result in the area becoming muddier. Potential wildlife threats remain very limited with only a few insects such as ticks and mosquitoes that spread diseases. European adders are the only venomous snake in Denmark and are very rarely seen anywhere close to campsites.

## 4.4 Infrastructure

The primary camp infrastructure will be or has already been installed by the municipal host, but there is always a need for adding Jamboree-specific infrastructure to ensure that the entire campsite is well connected. The local supply network will be expanded with temporary installations in line with regulations

to ensure that all needs are covered when it comes to toilet facilities, showers, electricity, water supply, subcamps etc. Overall, Denmark is extremely well supplied, and we have never experienced capacity issues at any of our national Jamborees. Because we are planning to host Spejdernes Lejr 2030 and the 27th World Scout Jamboree at the same campsite with the same municipal host, it gives us the best opportunities to prepare all necessary infrastructure installations well ahead of time.

### **WATER, TOILETS AND SHOWERS**

There will always be two separate water supply systems in place so that water is still available from the other system in case one of the systems fails. Moreover, there are a number of good Danish, Swedish and German suppliers of modern shower and toilet facilities, and we will be able to take all cultural aspects and special needs into account. We know it is increasingly important to take into account gender neutrality and privacy, so our facilities will include unisex / gender neutral toilets as well as individual shower cubicles. Sønderborg heating plant is also next to the campsite, which equals easy access to hot water for showers for all participants - but hot water will be accessible at any chosen campsite in Denmark. The water capacity can easily reach an average of 1,800 m3 per day without issues.

### **ELECTRICITY**

As with the water supply, there are always two power supply systems in place, one being an alternative supply system. The primary supply will come from power plants through the local supply system, but back-up generators are in place throughout the Jamboree. A UPS system will be in place at the Jamboree hospital and emergency services to ensure that any potential power failure will never reach those facilities. We always have maximum power capacity in our Jamboree setup with a mixture of transformers and generators. In 2017, we never used more than 33.5% of the total maximum electricity load. It is our ambition to make the camp as sustainable as possible, which includes energy sources. The green transition in Denmark is in full progress, and it is our expectation that we will have access to solar and wind power for the camp in 2031.

### **SEWAGE**

The camp sewage system is linked to the public sewage treatment plant, which has sufficient capacity to cover the entire Jamboree. However, wastewater pumps and buffer tanks are installed as back up in any case. There is also an emergency system of stand-by sewage suction trucks that can be activated within a few minutes. In 2017, there was a maximum daily capacity of 56,000 PE with a daily usage of approximately 32,000 PE, which leaves plenty of room for scaling up for a World Scout Jamboree. Grey and black water will be handled separately in accordance with national regulation, and we will look into the possibility of sustainably recycling the grey wastewater.

### **WiFi AND DATA**

WiFi will be installed to cover the entire campsite with enough capacity for all participants to connect their devices. The campsite will also have 5G cellular data coverage, and Denmark is planning to have 6G data coverage by 2030. We have good experience working with the Danish mobile operators, who have always supported mobile data coverage of our Jamborees.

### **ROADS**

Roads for the transportation of people and equipment will be built. There will be high quality demands of width and load capacity. Main transportation roads are already in place. All of them can accommodate two passing vehicles. There are also already some small roads, but more will be built for the Jamboree. All roads are typically connected through a ring road system, so that there is always an alternative way around and across the campsite.

## 5 DATES FOR THE 27TH WORLD SCOUT JAMBOREE

Our proposal is for the 27th World Scout Jamboree to last 12 days from **28 July 2031** to **8 August 2031**. The suggested period offers the most favourable conditions in terms of both the weather and the climate in Denmark and will be optimal for the Jamboree participants to take an active part in the programme activities and enjoy the Danish countryside. The period also overlaps with the traditional summer holiday season in Denmark and a majority of other countries and will not clash with the start of any school terms. Moreover, the suggested time frame is common for the other World Scout Jamborees organised in the Northern Hemisphere to this date.

## 6 WOSM GUIDELINES

### Guidelines for the hosting of the World Scout Jamboree

We are highly aware that WOSM's guidelines will be updated during the period of planning for the 27th World Scout Jamboree, and as such this is our approach to meeting the current designated guidelines. We have gone through the current guidelines for hosting and incorporated them throughout our bidding report in relevant areas. All in all, we are fully aware of what the guidelines require from us as hosts of a World Scout Jamboree.

### Guidelines on Sustainable Events - our sustainability commitment

Denmark is a frontrunner when it comes to the green transition and mainstreaming sustainability, and there is a national climate strategy providing the framework for municipalities. Furthermore, environmental responsibility is an integral element of our camp structure with a focus on (1) waste sorting into 10 different nationally applicable categories, (2) green energy and vehicles - electric vehicles are primarily used, (3) the purification of all wastewater, (4) CO<sub>2</sub> neutral heat from local suppliers, and (5) a circular economy. It is not the plan to build any new buildings/facilities, which means we will leave the campsite as we found it - or most likely a little bit better. Finally, the establishment of the campsite will follow all environmental regulations regarding the protection of biodiversity and animals. In addition, the 27th World Scout Jamboree will be hosted at the same site as Spejdernes Lejr 2030, which means there is a firm basis for minimising the negative environmental impact. Moreover, we will create partnerships with environmental companies and organisations, for example the Danish Youth Climate Council (part of the Danish Ministry of Climate, Energy and Utilities) to ensure that we use the most up-to-date knowledge of climate, the environment, technology etc. to make a sustainable event. We will also research the best possible way to offset the Jamboree's carbon emissions.

### Code of Conduct

We are fully aware and in line with the Code of Conduct for bidders prepared by WOSM. We will make sure that everyone involved in the bidding process is thoroughly aware of the Code of Conduct and will act accordingly.

### Host Organisation Agreement

We are aware of all criteria, including core and operational requirements, and will make sure that the World Scout Jamboree organisation lives up to all responsibilities and legal obligations set out in the Host Organisation Agreement.

## OVERVIEW OF TECHNICAL CRITERIA

### CRITERIA

### FULFILLED

**Declaration of intent**

Sent to WOSM in February 2023

**GSAT assessments**

The three designated NSAs have completed the GSAT 3.0 assessment (1 self-assessment and 2 full assessments)

**Technical visit from WOSM**

Technical visit in May 2023

**Letter from the Government of Denmark**

Support letter received with signature from the Minister of Foreign Affairs and the Minister of Culture

**Understanding of WOSM guidelines, policies and agreements**

Sufficient understanding of the WOSM guidelines described in the report

**NSO reporting to WOSM**

Sufficient reporting submitted in the WOSM NSO portal





## 7 CONCLUSION

On behalf of Scouting and Guiding in Denmark, we are very proud to present our bidding report for the 27th World Scout Jamboree for the approval of the World Scout Committee. We firmly believe that we are presenting an exciting and impactful concept backed by not only a solid setup, but also strong experience and knowledge. The idea of hosting a World Scout Jamboree in Denmark has generated a huge amount of excitement, curiosity and interest among members within all our associations, and we look forward to building on this excitement as the process progresses. It is important for us to ensure that our bid is a project with ownership all the way from national level to the individual Scout and Guide. As an NSO, Denmark has been actively engaged in WOSM for decades, and we feel this is the right time for us to step forward and offer our experience and resources to the Movement.





SPJD ERNE

